

genuine spare parts



X-CHAIN

4X160W LED

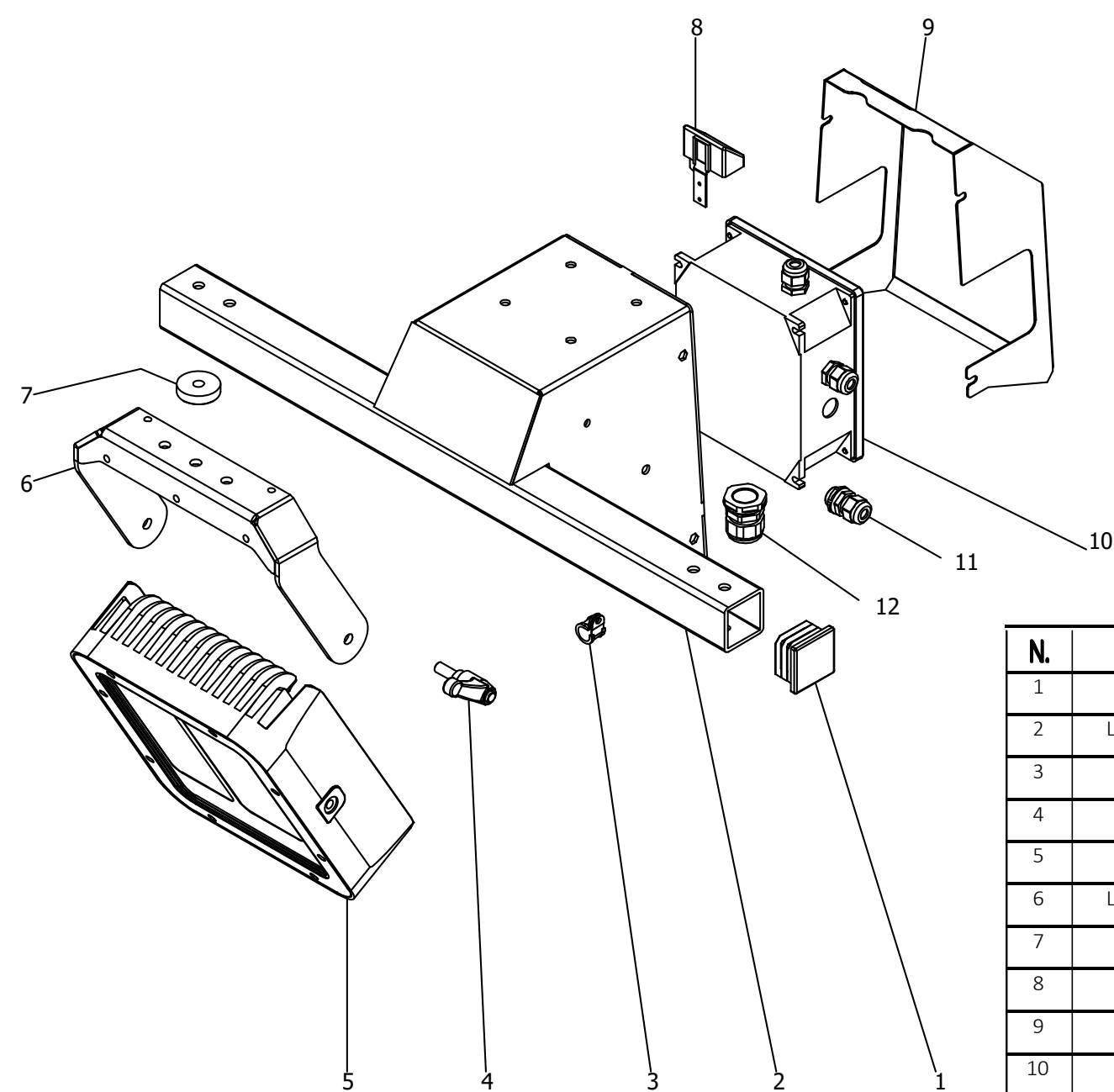


- PAGE 1: FLOODLIGHT
- PAGE 2: MAST
- PAGE 3: BASE STRUCTURE
- PAGE 4: CONTROL PANEL
- PAGE 5: TRIME UK CONTACT

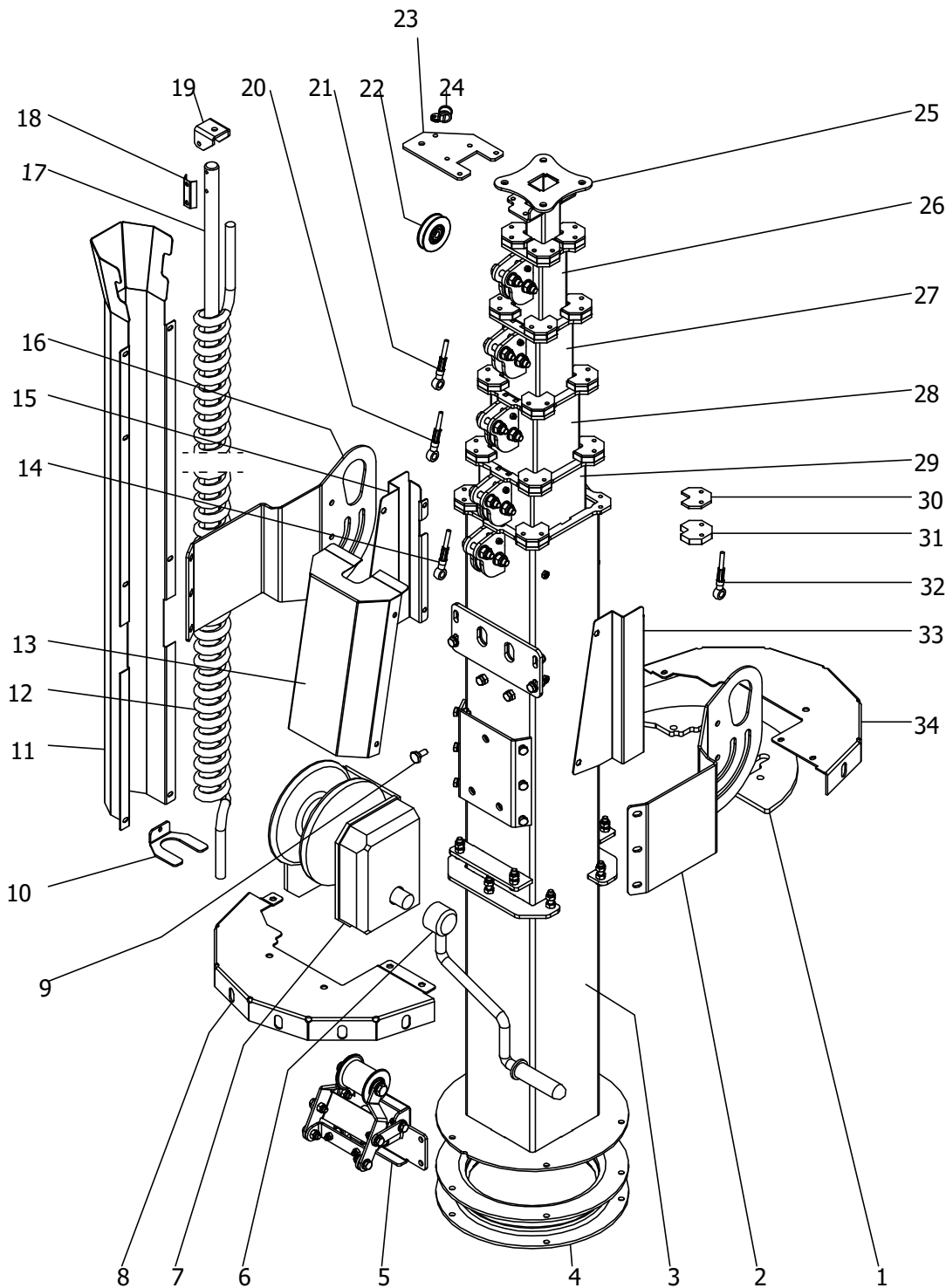


TRIME

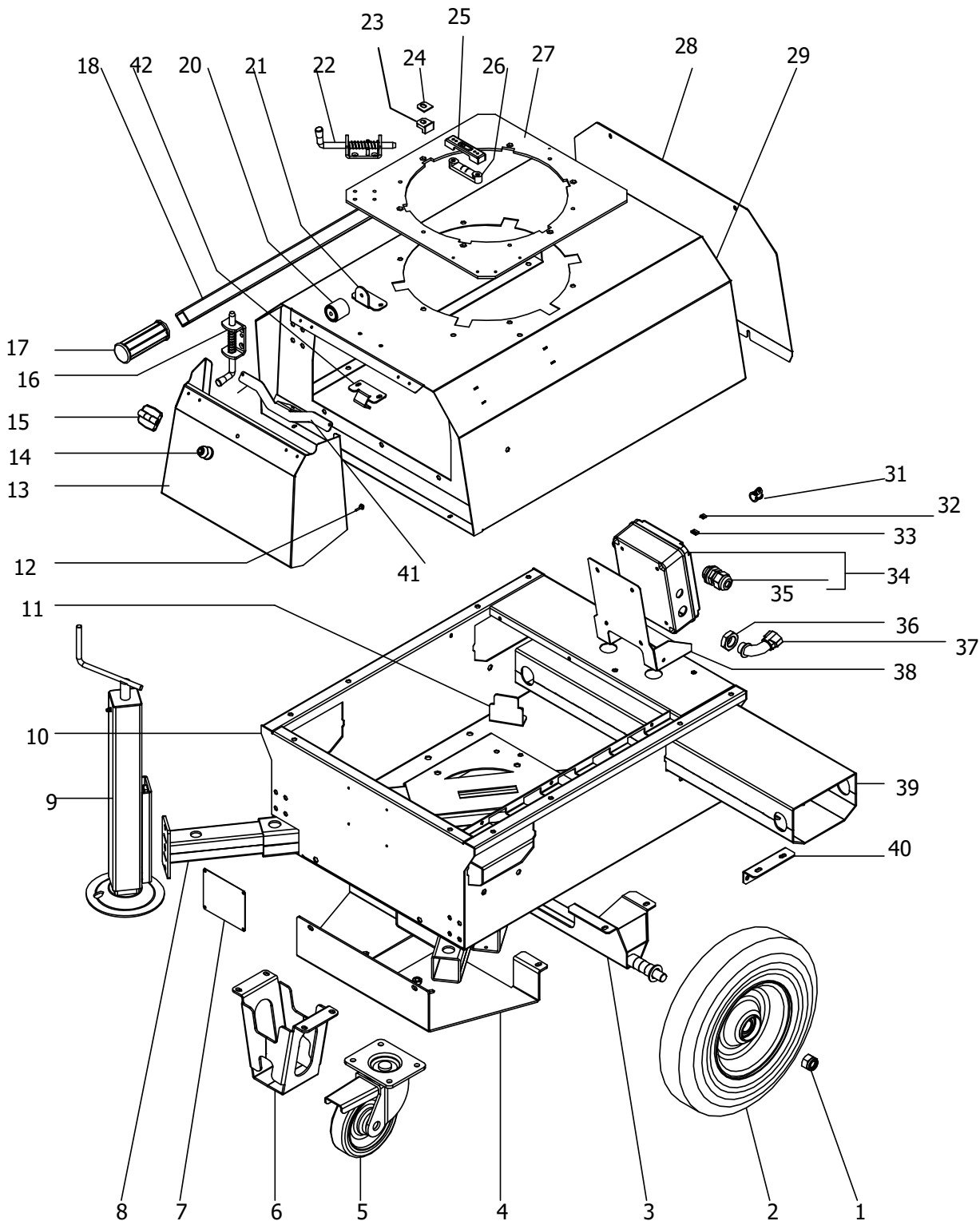
Lighting Tower Specialist



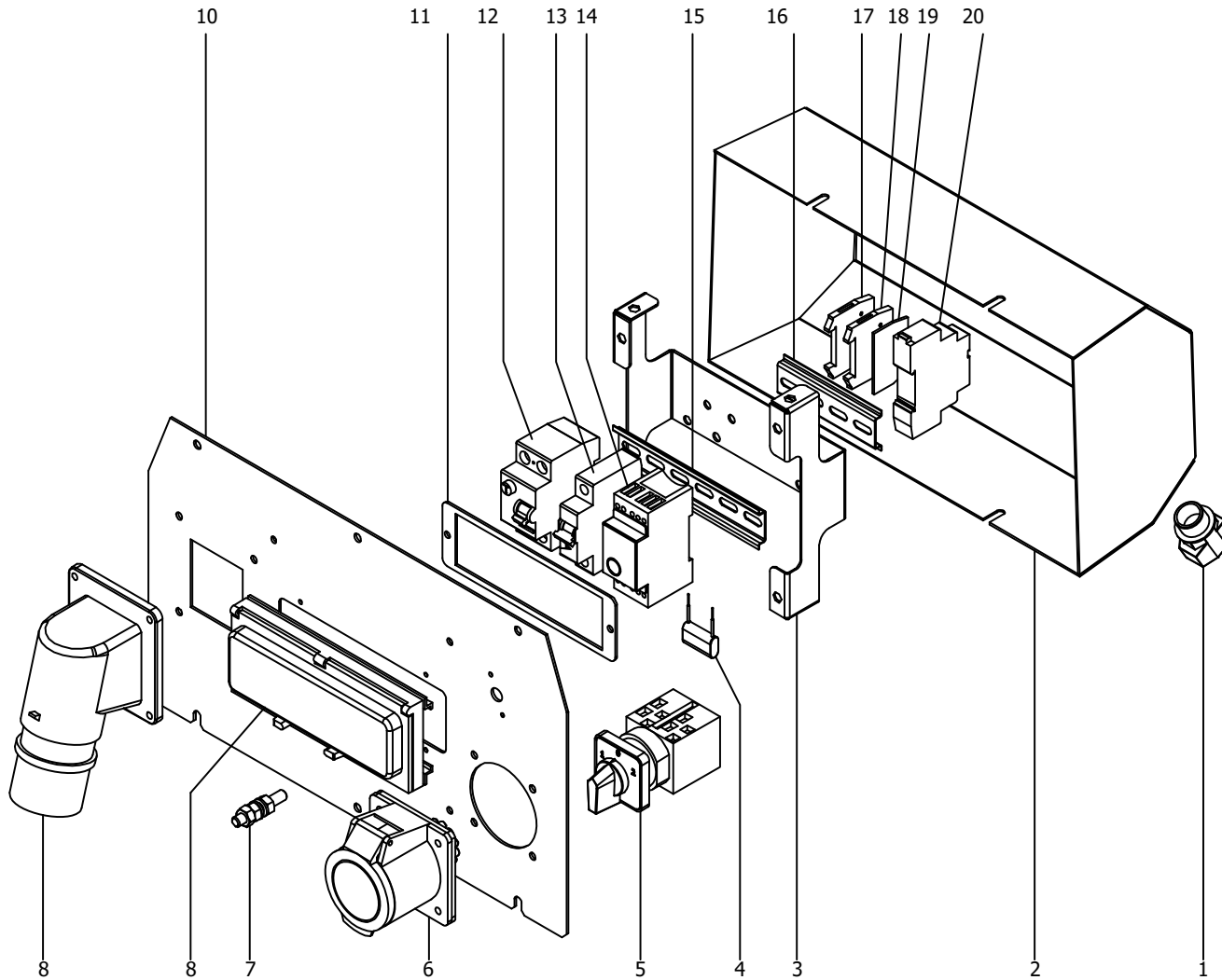
N.	CODE	DESCRIPTION
1	AC000_P037_010	CAP
2	LED04_C000_040ZN	MAIN FRAME FOR LED FLOODLIGHTS
3	AC000_M038_007	RUBBERIZED HOSE CLAMP
4	AC000_M000_076	FLOODLIGHT HANDLE
5	AC000_E026_075	LED 150W FLOODLIGHT
6	LED04_C000_101ZN	BRACKET FOR LED FLOODLIGHT
7	AS000_M023_025	FLOODLIGHTS SPACER
8	AC000_E006_005	LIGHT SENSOR
9	LED04_C000_041	JUNCTION BOX COVER
10	AS000_E006_045	JUNCTION BOX
11	AC000_E018_008	CABLE GLAND PG11
12	AC000_E018_002	CABLE GLAND PG21



N.	CODE	DESCRIPTION
1	PFM08_C031_061	DRAG FLANGE
2	PFM07_C031_048ZN	LIFTING EYE, RIGHT PART
3	PFM07_C000_031	1° SECTION MAST
4	PFM07_C000_032ZN	MAST SUPPORT
5	SI000_G000_005	COMPLETE SAFETY STOP SYSTEM
6	AC000_M000_084_01	WINCH HANDLE
7	AC000_M000_084	WINCH
8	PFM08_C031_062ZN	MAST POSITIONING PLATE, LEFT
9	AS000_M000_029	SCREW
10	PFM08_C000_047	COILED CABLE LOCK
11	PFM07_C000_037	COILED CABLE PROTECTION
12	AC000_E006_016	COILED CABLE
13	PFM08_C000_018	FRONT COVER
14	AC000_M021_019	STEEL ROPE L.1170MM
15	PFM08_C000_020	LEFT COVER
16	PFM07_C031_049ZN	LIFTING EYE, LEFT PART
17	PFM07_C000_014	CENTERING ROD
18	PFM07_C000_019	CENTERING PIN CLAMP
19	PFI08_C031_017	CENTERING PIN SUPPORT
20	AC000_M021_018	STEEL ROPE L.1210MM
21	AC000_M021_015	STEEL ROPE L.1200MM
22a	AC000_M021_002	PULLEY D.60
22b	AC000_M021_001	PULLEY D.58
22c	AC000_M021_003	PULLEY D.62
22d	AC000_M021_008	PULLEY D.63
23	PFM07_C000_013	CENTERING ROD SUPPORT
24	AC000_M038_007	CLAMP WITH RUBBER
25	PFM07_C000_006ZN	6° SECTION MAST
26	PFM07_C000_035ZN	5° SECTION MAST
27	PFM07_C000_034ZN	4° SECTION MAST
28	PFM07_C000_033ZN	3° SECTION MAST
29	PFM07_C000_032ZN	2° SECTION MAST
30	PFI08_C031_012ZN	MAST ANGLE GUIDE REINFORCEMENT
31	AS000_M000_005	MAST ANGLE GUIDE
32	AC000_M021_009	STEEL ROPE L.4300MM
33	PFM08_C000_019	RIGHT COVER
34	PFM08_C031_063ZN	MAST POSITIONING PLATE, RIGHT



N.	CODE	DESCRIPTION
1	AC000_M038_044	BOLT
2	AC000_M000_038	WHEEL
3	XCHAIN_C003_033	AXLE
4	XCHAIN_C000_080	FRONT SUPPORT
5	AC000_M000_097	WHEEL
6	XCHAIN_C000_086	FRONT SUPPORT
7	XCHAIN_S010_136B	DATA PLATE
8	XCHAIN_C000_031ZN	STABILIZER BEAM
9	AS000_M000_048ZN	STABILIZER
10	XCHAIN_C004_078	MAIN BASE STRUCTURE
11	XCHAIN_C000_036	ANTIROTATION PLATE
12	AC000_M024_085	BUMPER
13	XCHAIN_C008_085	DOOR
14	AC000_M000_100	FEMALE BUMPER
15	AC000_M000_055	HINGE
16	AC000_M000_086	CLOSING LOCK PIN
17	AC000_P037_003	KNOB
18	XCHAIN_AS000_010ZN	HANDLE BEAM
20	AC000_M000_100	MALE BUMPER
21	XCHAIN_C007_099ZN	MALE BUMPER SUPPORT
22	AC000_M000_003	CLOSING LOCK PIN
23	PF108_C031_013	ROTATIONAL AND DRAG RUNNER
24	PF108_C031_014ZN	ROTATIONAL AND DRAG PLATE
25	PF108_C031_029	BUBBLE LEVEL PROTECTION
26	AC000_M016_002	COVER BUBBLE LEVEL
27	XCHAIN_C000_006ZN	TOP ROTATION CENTERING
28	XCHAIN_C007_088	PLATE CANOPY
29	XCHAIN_C007_087	REAR COVER
31	AC000_M038_007	CLAMP WITH RUBBER
32	AC000_E006_002	2 POLES CLAMP
33	AC000_E006_003	3 POLES CLAMP
34	AS000_E006_034	JUNCTION BOX
35	AC000_E018_002	CABLE GLAND PG21
36	AC000_E018_014	BOLT PG16
37	AC000_E018_017	CURVED CONNECTOR
38	XCHAIN_C006_050	JUNCTION BOX SUPPORT
39	XCHAIN_C000_079ZN	FORK LIFT BEAM
40	XCHAIN_C000_017	FORK LIFT BEAM PLATE
41	XCHAIN_C007_102ZN	BUMPER SUPPORT REINFORCEMENT
42	XCHAIN_C007_101ZN	BUMPER SUPPORT REINFORCEMENT



N.	CODE	DESCRIPTION
1	AC000_E018_016	CONNECTOR
2	XCHAIN_C006_125	REAR PROTECTION
3	XCHAIN_C006_135	CIRCUIT BREAKERS SUPPORT
4	AC000_E000_070	CAPACITOR
5	AC000_E006_041	SELECTOR
6	AC000_E011_002	230V 32A OUTPUT
7	AC000_M038_035	EARTHING TERMINAL
8	AC000_E000_008	COVER
9	AC000_E011_009	230V 32A INLET
10	XCHAIN_S010_134B	aluminum front plate
11	XCHAIN_C006_044	CIRCUIT BREAKERS FRAME
12	AC000_E012_028	16A RCD
13	AC000_E012_027	LAMP SWITCH
14	AC000_E016_004	LIGHT SENSOR
15	AC000_M038_057	DIN BAR L.150
16	AC000_M038_049	DIN BAR L.100
17	AC000_E006_022	FINAL ELEMENT FOR TERMINAL BOARD
18	AC000_E006_021	TERMINAL BOARD ELEMENT
19	AC000_E006_024	TERMINAL BOARD COVER
20	AC000_E006_047	CONTACTOR



TRIME

www.trimeuk.com

SPARE PARTS TEAM



Norman Pipe
Operations/Spares Manager
tel. 01480 220 500
mob. 07495 670269
normanpipe@trimeuk.com



Marcus Wilson
Spares Part Sales
tel. 01480 220 500
marcuswilson@trimeuk.com

TECHNICAL TEAM



Wayne Brennan
Technical Support Manager
tel. 01480 220 500
mob. 07494 654373
waynebrennan@trimeuk.com



Sally Gunn
Accounts Administrator
tel. 01480 220 500
mob. 07494 654373
admin@trimeuk.com

SALES TEAM



Emma Cohen
Sales Assistant
tel. 01480 220 500
marketing@trimeuk.com



Mark Taylor
Sales Manger
tel. 01480 220 500
mob. 07539528017
marktaylor@trimeuk.com



Andrew Owen
Sales Manger
tel. 01480 220 500
mob. 07983871870
andrewowen@trimeuk.com



Paul Hay
Managing Director
tel. 01480 220 500
mob. 07836 522223
paulhay@trimeuk.com



Ray Caulfield
CEO
tel. 01480 220 500
mob. 07970140680
raycaulfield@trimeuk.com

