

WASH BAY

X-WASH X-8^{CT}



Recycles 100% of water used

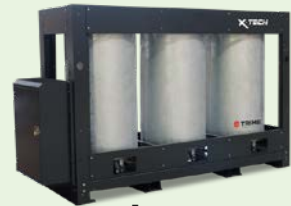


Zero contaminants released
down the drain



Outdoor & Indoor use

filtering system



Mod. X-TECH-30
3000 liters' capacity



For a more sustainable
& environmentally
friendly future



TRIME[®]
Water Treatments

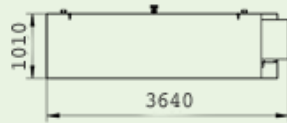
X-WASH X-8^{CT}

WASH BAY

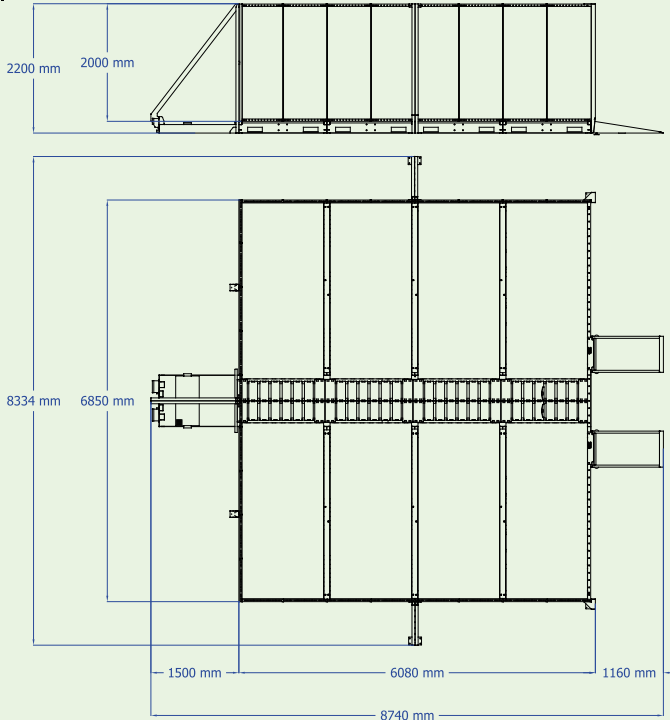
✓ **free**
of charge
site survey

UNIT DIMENSIONS

X-30 Filtration Tank:



X-8CT + X-30 Collection Tank:



A self-contained, environmentally friendly, cleaning system for construction plant and equipment. It comes as standard with heavy duty automatic X-TECH-30 filtration systems. The wash bay features a diamond tread ramp and a 2200 mm high wall. The wash bay floor pan directs the dirty water and sludge from the equipment being cleaned to a solids collection tank at the rear of the wash bay. In this version the side collection tanks are substituted from a central collection tank. The tank is 750 mm wide and collects mud, stones and debris from the lateral mounted modules. The wide size allows the customer to clean it using a little digger. Covering grid can be removed thanks to the kit of lifting hooks available with the system. The central collection tank increases the net cleaning surface from 36 to 40.5 sqm and the dimension of the bay to 6 x 6.75 m.



FEATURES

- ✓ Recycles 100% of water used for re-use in your pressure washer
- ✓ Closed circuit system
- ✓ Easy to move and transport
- ✓ Quick and simple assembly
- ✓ Zero water waste
- ✓ Environmentally friendly

SITE REQUIREMENTS

- ✓ 230V 16A Electric connection
- ✓ Water connection
- ✓ Flat and level concrete base works

Technical data

Wash bay area dimension (mm)	6750 x 6000
Total dimension (mm)	8750 x 6750x
Filtration tank dimension (mm)	(X-30) 3650 x 1010 x 2160h
Maximum load capacity (kg)	5000
Walls standard height (mm)	2200
Total dry weight of the bay (kg)	5950
Diaphragm pump	0,054 kW – 17lt/min
Booster pump	0,37 kW – 5 to 40 lt/min
Filtering system	X-TECH-30
Option filtering system	X-TECH-60
Option maximum load capacity (kg)	20.000



Trime UK Ltd | 1 Redwing Court, Falcon Road, Hinchingsbrooke Business Park, Huntingdon PE29 6FG
01480 220500 | www.trimeuk.com | sales@trimeuk.com

The company reserves the right to modify the technical specifications, items and design without notice. The images of the products are indicative for illustrative purposes only.